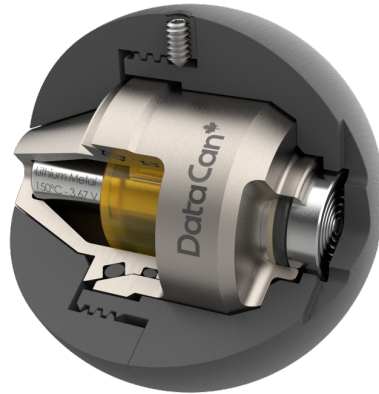


# Smart Frac Ball



## Application

Records downhole pressure and temperature during fracture treatment. The ball can be flowed back to the surface, recovered, and the pressure and temperature data are then downloaded from the internal memory.

## Benefits

The spherical outer housing allows the frac ball pressure gauge to be deployed and retrieved with existing launchers and catchers.

## Features

- Replaceable Outer Ball Housing
- 2.0" and Larger Ball Sizes are Available
- 10 Days of Data at 1 Second Sampling
- Pressure Rating of 15,000 psi

## Smart Frac Ball Core - Titanium

Pressure	Temperature	Part No.
15,000 psi	150 °C	112126

## Outer Housing - PEEK

Diameter	Specific Gravity of Assembly	Part No.
2"	1.82	113237
2-1/8"	1.70	113238
2-1/4"	1.58	112312
2-1/2"	1.40	112313
2-3/4"	1.28	112314

## Accessories

Accessory Type	Part No.
Sensor Filter (For 2" Outer Housings)	112983
1/16" Allen Key	108603
USB Download Cable	112309
Soft Carrying Case	113240
Redress Kit Viton 90	113239

## Compatible Batteries

Size	Max Temp	Part No.
1/2 AAA	150°C	114837

## Specifications

	Pressure	Temperature
Accuracy	0.03% F.S.	0.5°C
Resolution	0.0003% F.S.	0.005°C
Drift	< 3 psi/year	< 0.1°C/year
Capacity	5 Million Samples	
Communication Method	USB	
Max Pressure	1,000bar (15,000 psi)	
Max Temperature	150°C (302°F)	